



• *President's letter* •

Welcome to summer and new perspectives on AIA Delaware

Hue, AIA, LEED® AP

Dear colleagues: **D**ARCHI•type officially welcomes you to summer (actually, the summer solstice was June 20 at 5:59 p.m.). I hope that all are prosperous and healthy. Speaking of time (and for those who may be getting anxious), my term as your AIA Delaware president ends in six months, one week, five days, 14 hours and some odd minutes as of this writing. Though I say that tongue-in-cheek, I am well aware that many of the changes my administration has effected have caused a bit of a stir throughout our component; frankly, I am pleased that AIA Delaware has become a topic of conversation and am not bothered by the background noise.



Our organization is continuing to morph as it must to survive and to become more user-friendly to those young architects who will lead our tomorrows. How many among you oldtimers remember your first couple of years as an intern and remember your impressions of the organization; did you question the establishment, did you push for change, or did you sit back and become complacent? Regarding you youngsters, what have your impressions been thus far; are you questioning, do you seek change, or, again, will you just sit back and watch?

The Revitalization Committee and your board continue to work toward creating a stronger, more vibrant component. These bodies have energy and enthusiasm that is growing with each meeting. Some of our current initiatives include:

- Engaging your new executive director, **Nancy Payne**, with AIA National, our Mid-Atlantic regional office, and the support organization known as the Council of Architecture Component Executives (CACE).

- Scheduling a long-range planning session for this fall and the administration that takes over for 2009.

Continued on page 2

• *Going green* •

• **AIA Delaware**

Allied member company Hugh Lofting Timber Framing, Inc. has made more than a passing commitment to green construction; it has determined to live it.

The company has adopted a saying—“Sustainability Begins at Home”—and its newly renovated office incorporates many sustainable elements, including: recycled barn wood, fly ash content concrete, radiant heat from a scrap wood fired boiler, energy efficient lighting and daylighting techniques, low-e windows and no-VOC paints.

“It was important for us to reflect our company mission in our facility,” said Hugh Lofting, president.

“More and more clients are asking how to incorporate elements of green into their homes. Almost all of the commercial projects we see specify Forest Stewardship Council- (FSC) certified woods and many plan to seek LEED certification.”

Continued on page 2



Internships wanted!

AIA Delaware has received several requests for internships and co-op assignments for students for the summer and the new school year in the fall.

If your firm would like to offer such opportunities, contact AIA DE Executive Director **Nancy Payne** at **302-654-9817** or **director@aidelaware.org**.

• Chapter calendar •

• The **AIA Delaware board of directors** meets at 11:30 a.m. on the third Tuesday of every month. The next AIA DE board meeting will be on **July 15**. All members are welcome. There is no charge for attending board meetings, but RSVPs must be made to Executive Director **Nancy Payne (director@aidelaware.org)** to ensure a correct count for lunch.

• The **AIA DE board** will not meet in August.

• AIA DE will hold its **3rd Annual AIA DE Sustainability Conference on September 10**, at the University of Delaware, Lewes, DE.

Foundation receives community recognition

The Delaware Architecture Foundation (DAF), the public outreach and education arm of **AIA Delaware**, recently received an Award of Recognition from the Delaware Economic Development Office and Delaware Main Street program for its role as a Main Street Community Partner “in recognition of exceptional service to the mission and activities on behalf of Greater Brandywine Village Revitalization, Inc., a certified State of Delaware Main Street program.

Kenneth Freemark, AIA, president of the DAF and AIA DE past president, accepted the award with **David Menser**, a public board member of the DAF and a resident of Brandywine Village.

• Job opportunities •

Tevebaugh Associates seeks a PROJECT ARCHITECT for its Wilmington, DE, office. Ideal candidate is enthusiastic, efficient and has a minimum of eight years' experience. Must have strong leadership, design and technical skills, and be proficient with Autocad. Tevebaugh Associates is a 17-person architectural firm that specializes in higher education, health care, public safety, parking, office buildings and master planning. Excellent medical & dental benefits, 401K, bonus opportunities, paid time off, competitive salaries and friendly working environment. Reply by e-mail to rstratford@tevebaugh.com or fax to 302-984-2957.

**The Grass is Greener Here...
and so are the Buildings!**



TETRA TECH

Architectural and Engineering
Positions Available

Architect PM w/DoD * Civil Dept. Mgr. * Sr. Landscape Architect
Architect I - Interiors * Survey Assistant * Civil Engineer(s)

Newark, Delaware Office
Apply online at www.tetrattech.com

President's letter, continued

• Moving forward with plans for our annual **Sustainability Conference on September 10**, which should, again, be a huge success.

• Planning a walking tour and membership meeting on **October 1** (more info to come; save the date).

• Developing a wish list for our new headquarters that may include many facets that will become a magnet for our membership and the community at large.

• Continued support of all DAF initiatives.

• Supporting our **Allied members** by reserving a tent at the recent Associated Building Contractors (ABC) Crab Feast and offering tickets to our **Associate members** as a way of bringing them together (see article, p. 6).

• Supporting the **Friends of Furness Railroad District and Lower Market Street Design District (LOMA)** of which we are now a part.

Change can be difficult, but we live in a world that is changing exponentially around us, and we will wither if we don't evolve. We have the bones of a phenomenal organization, a rich and proud heritage, and the luxury of small numbers to be more inclusive for all—all who want to participate.

So, I will ask again:

Where will you sit?

Will you become engaged, or will you just be background noise to new possibilities for our future?

Going green, continued

Last year, Amy Cornelius, a member of the Lofting staff, became certified by the U.S. Green Building Council as a LEED® AP. The company provides green consulting to clients, as well as construction management services for LEED projects. “We have been on the forefront of the green building movement and have the experience to help our clients in many ways,” said Cornelius.

One of the firm's most exciting green projects is a Kennett Square, PA, residence that is being considered for LEED-H certification and features a myriad of green technologies, including: timber framing, passive solar and ventilation, energy star lighting and appliances, innovative stormwater techniques, structural insulated panels from Foard Panels and a Superior Wall foundation (www.hughloftingt看木frame.com/Green/Topel.html).

“We are a registered LEED for Homes contractor, and that makes us proud,” said Lofting.

In 2008, the company launched a boutique line of pre-designed homes called the EcoCollection, featuring homes are designed by prominent local architects and incorporate many green technologies that support applications for LEED-H designation. The company plans to build one or two LEED-H homes a year (<http://www.hughloftingt看木frame.com/Green/ecohomes.html>).

“The green movement is like a tidal wave that is bringing change to how we live and how we do business,” said Lofting.

• **George, Miles & Buhr, LLC (GMB)** hosted a LEED seminar for 20 GMB employees on May 1, 2008, in Salisbury to prepare the firm's architects and engineers for the LEED certification exam.

Architect participates in Career Day at St. Mark's

By Nancy Payne, AIA DE Executive Director

“Keep learning!” This was one of the phrases you would have heard if you were a junior at St. Mark's High School in Wilmington, where AIA Delaware board member **Patrick Fugeman** talked with students during Career Day last month. Patrick's son is a member of the St. Mark's junior class of about 400 students.

Patrick felt it was important to endorse the fundamental idea that education never ends. He encouraged the students to keep learning, even after they obtain their high-school diplomas and college degrees, accomplish their post-graduate work in their fields of choice, and enter the workforce.

Many professionals, representing a wide variety of careers, were on hand to provide students with real-life information, advice and answers to their questions about career options. During the program, each student was encouraged to choose up to four areas of interest and attend a discussion to learn more about the particular field, such as architecture.

The excitement Patrick has for the field of architecture came through as he talked with the students about how the architectural profession is transferable—an architect can work anywhere

... from Newark to New York to New Delhi. An architect can be a sole practitioner, part of a firm, a generalist or a specialist in a particular type of building (stadium, hospital, home, jail, museum and more). After each session, several students stayed to ask him questions, such as, “What classes should I be taking, if I want to prepare for a career as an architect?” and “Can you tell me what the best schools for architecture are?”

Patrick told the students that, while a career in architecture can mean long hours and hard work, it can also bring fun and good pay, and can be incredibly fulfilling for a lifetime.

MIKEN Builders, Inc.

General Contractors/Construction Managers

Commercial Division	Residential Division
19 Davidson Lane New Castle, DE 19720 Phone: 302-656-2556 Fax: 302-656-1865	72 Cedar Drive Millville, DE 19967 302-637-4444 302-637-4526
Website: www.mikenbuilders.com	

Member:

AIA Delaware-Allied Professional/Associated Builders & Contractors/American Society of Professional Estimators

The Right Materials

Fire Resistant Design Flexible
Low Maintenance Superior Longevity
Durable & Safe Cost Effective
Aesthetically Valuable Fast Construction Time

The Right Way

Constructed by Experienced
Union Craftworkers & Contractors



We Build for Life

International Masonry Institute

300 Northpointe Circle, Suite 303 • Seven Fields, PA 16046
Ph: (724) 776-1930 • Fax: (724) 776-4963 • www.imiweb.org

*Designing the Framework
for Architectural Excellence*



Extraordinary Service....

....Exceptional Solutions



BAKER, INGRAM & ASSOCIATES

STRUCTURAL ENGINEERS

www.bakeringram.com

DOVER 302.734.7400

NEWARK 302.456.1757

DELAWARE • PENNSYLVANIA • NEW JERSEY • MARYLAND

TV show seeks “amazing renovations”

The cable television show “My Big Amazing Renovation” on Home and Garden Television (HGTV) is in production of its second season.

The show is coming to northern Delaware (Dover, DE to Philadelphia, PA), and producers are looking for privately owned homes in the early stages of major renovations (not yet framed). These renovations must also transform at least some of the original spaces (including the kitchen), double the size of the original structure, and change the exterior look.

Any AIA Delaware members are invited to inform the show about any “BIG, AMAZING” renovations that they would like to see showcased.

Projects must: just be starting a major renovation (not yet framed); double the size of their house; transform the original space, including the kitchen; alter the look of the front exterior; have several unique design projects planned; have a set budget and timeframe for completion of the renovation; and have owners who are passionate about their renovation, and eager to share their experience with others.

The show does not pay for renovations, just documents the transformations.

The series, which will premiere this fall, is produced for HGTV by High Noon Entertainment in Denver, CO.

For more about High Noon Entertainment, visit www.highnoonentertainment.com.

my **big**
AMAZING
renovation

Recent appellate decision concerning architectural designs favors Trump buildings

Andres Quintana, Esq., Quintana Law Group, APC, Los Angeles County, CA

Editor's note: The AIA Delaware newsletter received this unsolicited article from the law firm noted above and is providing it as professional education for members.

On May 14, 2008, the U.S. Court of Appeals for the Eleventh Circuit, which has jurisdiction over federal cases originating in the states of Alabama, Florida and Georgia, issued an important decision concerning copyright protection of architectural works.

In the case of Oravec v. Sunny Isles Luxury Ventures, L.C., plaintiff Paul Oravec brought a lawsuit under the Copyright Act against several parties associated with the Trump Palace and the Trump Royale (collectively, “Trump Buildings”), twin high-rise condominiums in Sunny Isles Beach, FL.

Oravec alleged that these defendants infringed his copyrighted architectural designs through the design, development and construction of the Trump Buildings.

The district court granted summary judgment to the defendants. The appellate court affirmed the district court’s decision.

This recent federal ruling underscores the complexity of architectural copyright lawsuits and the importance of timely and correctly registering works under the two forms of copyright protection available to architects and designs professionals. One is under the provision of the Copyright Act for “pictorial, graphical, or sculptural work” (i.e., the architectural plans, sketches, specifications and drawings themselves), and another is under the provision for “architectural works.”

AIA DE welcomes submissions to newsletter

AIA Delaware’s monthly *Archi•type* newsletter welcomes **member news and announcements of events** of interest to architects, especially events that offer Continuing Education Units.

Send your event information by e-mail to newsletter@aiadelaware.org or by fax to 302-654-7687. The deadline is the 10th of the month before publication.

APEX ENGINEERING INCORPORATED

CIVIL SITE ENGINEERING
LAND SURVEYING
WATER RESOURCES
LAND PLANNING
TRAFFIC ENGINEERING
CONSTRUCTION SERVICES
SEPTIC SYSTEM DESIGN

Residential Subdivision
West Chester, Pennsylvania

Veterans Memorial Cemetery
Wrightstown, New Jersey

University of Delaware
Newark, Delaware

Dedicated to Excellence and Client Service
Since 1995

27 West Market Street
Newport, Delaware 1980
302.994.1900 p/302.994.9099 f

● Member news ●

• Former **AIA DE Associate** director **Euiguem Ko** of **ABHA Architects** is now LEED-certified. Ko joins ABHA principals **Chandra Nilekani** and **Michael Deptula** in this designation; they both received their LEED accreditation in 2007.



• Welcome to new **Allied member Benjamin Moore Paint**, represented by Frank A. Feeley Jr., CSI (contact information shown below).

Frank A. Feeley Jr., CSI
Philly/DE/NJ Market
Architectural & Commercial
Development Representative

Benjamin Moore & Co.
402-2A Red Fox Lane
Newark, DE 19711
(t) 302 283-1439
(c) 302 218-8383
(vm) 800 635-5147 (ext.) 1955
(e) frank.feeley
@benjaminmoore.com



• Congratulations to **Michael E. Wheedleton, AIA** on being named a principal of **Davis, Bowen & Friedel, Inc.** He joined Davis, Bowen & Friedel, Inc., in November 1996 as a designer and soon became a project architect, upon becoming licensed by the state of Maryland. He was named an associate of the firm in 1998, and was promoted to senior associate in 2005. He is currently director of the Architecture Department in the firm's Milford, DE, office.



In addition to being certified by the **National Council of Architectural Registration Board (NCARB)**, Wheedleton holds licenses from Delaware, Pennsylvania and Maryland. He currently has more than 10 projects under his direction, including five fire-department renovations and two commercial and multi-family projects. He is also continuing work on projects for the Delaware Department of Health and Social Services and on the Dover Air Force Base.

Wheedleton's promotion recognizes "his fine work and dedication during his tenure at Davis, Bowen & Friedel, Inc.," according to the firm.

• Morgan H. Helfrich, project architect at **George,**

Miles & Buhr, LLC (GMB), participated in the CanStruction event at the Salisbury Festival in April, serving as a professional advisor to a team of five students from West Salisbury Elementary School.



The theme of the CanStruction event this year was "Kids at Play." Helfrich's team collected 344 cans and they designed and can-structed a hopscotch board. The team included Onshay Reaves, Mckenzi Gisiner, Shanya Landrum, Camerin Harris and Kambria Jones, and their teacher, Mrs. Connelly. Structures were judged on their creativity and how well they portrayed the theme. Based on these criteria, the West Salisbury Elementary team won "Best Theme" for its hopscotch board.

GMB is proud to congratulate these students on their efforts. GMB provides a wide range of A/E services, including water/wastewater treatment, land development, municipal/civil engineering, structural engineering, electrical engineering, and architecture.

GMB Senior Vice President Charlie O'Donnell



GMB's Canstruction participants.



The GMB "Canstruction" project.

Continued on page 6

AIA DE sponsors Associate member attendance at ABC Crab Feast

Several **Associate members** took advantage of a sponsorship from **AIA Delaware** to attend the Associated Building Contractors- (ABC) Delaware Crab Feast on June 19. During this event, which drew more than 3,600 participants, the Associate members had the opportunity to meet contractors, suppliers and architects for an evening of food, camaraderie and more.

"[We] enjoyed talking with contractors and consultants in a relaxed atmosphere, outside of the working environment, on more of a casual basis," said **Brian Cusick, Assoc. AIA**, and **Bryan Hutchison, Assoc. AIA**, of **Becker Morgan Group**.

Kevin Nyamumbo, Assoc. AIA, ABHA Architects, said, "I am grateful for the [sponsorship] and I hope to meet some AIA Delaware Associate members at future events."

Diana Mann, Assoc. AIA, Moeckel Carbonell Associates, said she "[thought] it is especially important for architects and the AIA to be represented at these types of events, where we can interact with contractors on a recreational basis ... It's great to break barriers so that, on the job site, we can have better communication and mutual respect."

Member news, continued

delivered a presentation to the Bennett High School Math Honor Society on May 14, on the various ways civil engineers use math, using key GMB projects as examples.

• **Hugh Lofting Timber Framing, Inc.** has been chosen by Warfel Construction to erect and clad with tongue-and-groove decking the trusses for the new Phoenixville YMCA entrance and lobby.



This phase is complete, and Warfel has selected Hugh Lofting Timber Framing to design, manufacture and erect several additional trusses to complete the facility. More than 42 complex glulam timbers and more than 19,000 board feet of 3" decking were assembled and installed over an active project site. "This project provided lots of challenges for our team but the tree like architecture of the trusses is truly beautiful to look at now that it is complete," said Hugh Lofting, company president.

"We are proud to have been a part of the Phoenixville YMCA project and look forward to working on similar projects in the future," said Lofting.

6/July 2008

• **Allied member S&S Resources** recently hosted a visit to Philadelphia, PA, by John Bradder, sales manager for Colt International (www.coltgroup.com), who is only available a few times a year in this area for consulting on suncontrol projects. According to S&S, Colt International is the market leader in the field of solar shading, with substantial experience in designing, manufacturing, installing and maintaining.



S&S Resources also is working with GKD MetalFabrics to showcase its newest product – Mediamesh, a revolutionary, new product that integrates digital imagery and color into Tigris. Through a special construction, GKD interweaves special LED strips at regular intervals. The LEDs can display all digital imagery, from logos to advertising and film. The LEDs are controlled remotely through a Web-based user interface.

For a brochure or CD about GKD MediaMesh, contact Joan Grande at S&S Resources (jgrande@ssresource.com).

• **Wohlsen Construction Company** has earned a Platinum Level status in the National 2008 Safety Training and Evaluation Process award program of the Associated Builders and Contractors (ABC). Wohlsen was one of fewer than 250 general contractors nationwide to receive this highest award level given by ABC in recognition of safety management excellence, highlighted by management commitment, a quality written safety program and OSHA incidence rates consistently below established national averages.



Wohlsen also has earned certification from the Quality Certification Program (QCP) of the Architectural Woodwork Institute (AWI) by demonstrating, through comprehensive testing and inspection, the ability to fabricate, finish or install work in accordance with the quality grade criteria set forth in the Quality Standards Illustrated (QSI) manual, which is the recognized North American standard for fine architectural woodwork.

Wohlsen is certified in QSI section 1700 premium grade, and therefore qualified to certify finishing.

The QCP ensures compliance with the QSI manual. The program is endorsed by the U.S. General Services Administration (GSA) and the American Subcontractors Association (ASA).

AIA Delaware **ARCHI**•type

Continuing education programs available

An AIA Delaware Allied member, **S&S Resources**, offers one-hour AIA CEU presentations that can be held at firm offices.

• **TRESPA—Design of Drained and Back-Ventilated Rain Screen Cladding**

The principles of ventilated rain screen cladding and their contribution to energy conservation and a comfortable, ambient climate are explained. By design guidelines, the differences between a drained and back-ventilated system and a pressure-equalized system are illustrated (www.trespa.com).

• **BASWaphon—Acoustics in Design**

Become familiar with the psychological effects of interior acoustics. Realize the importance of accounting for acoustics in the design phase of your projects. Be familiar with the principles of sound Reverberation, Reflection, Absorption and NRC Ratings (www.baswaphonusa.com).

• **GKD Metal Fabrics—Metal Fabric in Architecture Form & Function**

Identify benefits structural characteristics and application of using metal fabrics in architecture (www.gkdmetalfabrics.com).

To arrange a presentation for your firm, contact Joan Grande at jgrande@ssresource.com.

Other classes available

The continuing education courses below are available online at AEC Daily. Go to www.aecdaily.com, use the Continuing Education link and enter the course IDs below.

• **Simplex Continuing Education Course**

The CISCA Metal Ceilings Technical Guidelines

were created by the CISCA Metal Ceilings Committee of manufacturers and installation contractors to promote the use, design, production and application of quality metal ceiling systems in construction projects. AIA/CES Info: Course #AEC238; CSI Info: Course # CSI-A0064.

• **Trespa Continuing Education Course**

Provides an overview of drained and back-ventilated rain screen assemblies, including a discussion of engineering principles, design guidelines, and characteristics and advantages of composite cladding. AIA/CES Info: Course # AEC057; CSI Info: Course # CEU-AEC-06-189.



Ted C. Williams, P.E.
Head of Business Development
302.323.9377
ted.williams@landmarkengineering.com

Yesterday's Quality... Today's Technology

- Surveys
- Land Planning
- Engineering Design
- Permits & Agency Processing
- Construction Phase Services

• New Castle, DE
• Dover, DE
• Wayne, PA

LANDMARK ENGINEERING
CIVIL AND SITE ENGINEERING SPECIALISTS
www.landmarkengineering.com

HARDY Environmental SERVICES

A division of Jos. T. Hardy & Son, Inc. • Founded in 1921

Window Water Testing



Find out where the leak is and why.

- Installation Error
- Design Error
- Product Failure

302 328 9457

www.hardyservices.com

Certified InstallationMaster™

DIENER BRICK COMPANY



The Largest Brick & Masonry Display in the East
Park Avenue & Cuthbert Blvd., Collingswood, NJ 08108
RYAN J. RUTHERFORD

NJ (856) 858-2000 PHILA. (215) 922-3029
FAX (856) 858-6969 PHILA. (215) 922-3545
rrutherford@dienerbrick.com www.dienerbrick.com

SS Resources Inc. **Steve Schultheis**
www.ssresource.com

Consulting, Design Assistance, Budgeting and Sales Of:

Formglas, Inc./Fry-Reglet: Columns, lightcoves, domes, moldings and reveals
Decoustics: Acoustical ceiling and wall panels in a variety of finishes
Trespa: Solid surface material for walls/casework and exterior cladding
Simplex/GKD Wire Mesh: Acoustical and decorative metal ceiling and wall panels
Nysan Shading Systems: Chain, crank and motorized shades and exterior sun shading
Carvart: Decorative, textured, colored glass products in safety laminated panels
Legacy: Restroom partitions, counter tops, lockers in damage proof polymer

800.777.0220 • 610.353.8770 • Fax 610.353.9463 • info@ssresource.com



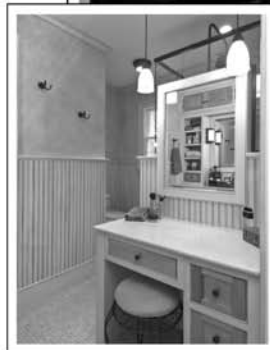
AIA Delaware

235 N. Market Street
Wilmington, DE 19801

WHAT IS BUILT ON *Respect*
INSPIRES CONFIDENCE AND TRUST

"Boss completed every phase of our extensive renovation just beautifully. From start to finish, they impressed us with their consideration, skill, and attention to detail. We could tell that the craftsmen took pride in their work, as they should. The results are just stunning."

— Gary and Diane Schueneman



HOMEBUILDERS & RENOVATORS

524 GREENHILL AVENUE • WILMINGTON, DE • 302-654-0886 • WWW.BOSSENERPRISESINC.COM